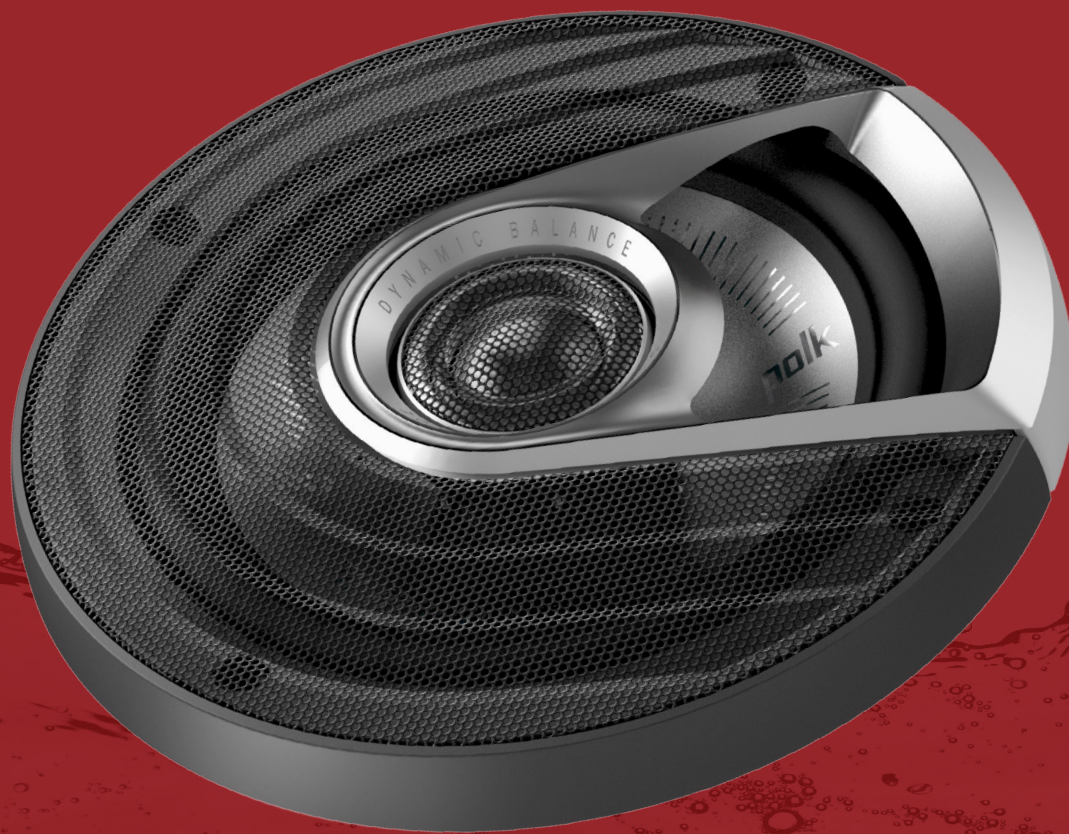


polk.

MM1

ULTRA-MARINE CERTIFIED
SPEAKER SERIES

POLKAUDIO.COM



polk.

MM1



ULTRA-MARINE CERTIFIED

IP56 rating (water- and dirt-resistant)

Waterproof santoprene inner and outer surrounds keep the elements out—and combat harsh effects of boat cleaning agents

Non-corrosive lightweight fiberglass reinforced ABS basket

Integrated coated crossovers for water-resistant protection

Weep holes for tough marine and outdoor applications

UV tolerant titanium plated cone

Tested for salt-fog, UV and humidity

MM1 is the next generation of our highly-acclaimed Mobile Monitor series—conceived, designed and engineered to deliver premium audio with unparalleled sonic detail and ultra-durable construction. It's the one crafted for full-on powerful sound, no matter what vehicle you're in.

Features

The Premium Upgrade

Tuned for the total sonic accuracy you get in a studio monitor speaker, the MM1 Series reconfigures this high-quality sound for an on-the-go experience that's way beyond anything you'll hear in an OEM factory setup.

Engineered for High-Performance Sound

Every element of the MM Series is meticulously engineered for high-performance sound—Dynamic Balance technology, pivoting 1" terylene tweeter, lightweight neodymium motor structure, high-temp Conex spiders and oversized voice coils for increased power handling.

Ultra-Marine Certified

Featuring an IP56 rating that includes a non-corrosive fiberglass reinforced ABS basket, epoxy coated crossovers, water-proof inner and outer surrounds, weep holes for proper drainage and titanium-plated cones, you get extra, long-lasting protection—that's all salt-fog and UV tested.

Dynamic Balance Technology

Patented process that guides material selection through rigorous testing that identifies and cancels out unwanted resonant frequencies.

MM1 Series Coaxial and Component Systems Specifications

	MM522	MM572	MM652	MM692	MM6502
Type	5.25" Coaxial	5" x 7" Coaxial	6.5" Coaxial	6" x 9" Three Way	6.5" Component System
Driver Complement (inches & mm)	5.25" 133.35 mm	5" x 7" 127 mm x 177.8 mm	6.5" 165.2 mm	6" x 9" 152.4 mm x 228.6 mm	6.5" 165.2 mm
Tweeter Complement (inches & mm)	1" 25 mm	1" 25 mm	1" 25 mm	1" + 3/4" 25 mm + 19 mm	1" 25 mm
Cutout Dimensions (inches & mm)	4.61" 117 mm	4.92" x 7.15" 125 mm x 181.6 mm	5" 127 mm	5.63" x 8.42" 143 mm x 213.8 mm	5" 127 mm
Mounting Height (inches & mm)	0.20" 5.07 mm	0.25" 6.35 mm	0.32" 8.07 mm	0.30" 7.60 mm	0.32" 8.07 mm
Mounting Depth: Top (inches & mm)	2.37" 60.1 mm	2.56" 65 mm	2.62" 66.5 mm	3.07" 78 mm	2.62" 66.5 mm
Mounting Depth: Bottom (inches & mm)	2.57" 65.2 mm	2.82" 71.5 mm	2.86" 72.6 mm	3.38" 85.8 mm	2.86" 72.6 mm
Peak Power Handling	240 W	300 W	300 W	450 W	375 W
Continuous Power Handling	80 W	100 W	100 W	150 W	125 W
Nominal Impedance (ohm)	4	4	4	4	4
Frequency Response (Hz)	50Hz-40kHz	35Hz-40kHz	40Hz-40kHz	30Hz-40kHz	35Hz-40kHz
Grille Height	0.92" 23.3 mm	N/A	0.95" 24.2 mm	1.03" 26.2 mm	0.95" 24.2 mm
Sensitivity (dB)	92	93	93	94	93